

12TH

Hands-on Course on  
Neurosurgical Approaches

# ENDOSCOPY AND MICROSURGERY IN THE VENTRICULAR SYSTEM AND SKULL BASE



**Universidad  
Europea Valencia**

LAUREATE INTERNATIONAL UNIVERSITIES

**ORGANIZATION**

Department of Neurosurgery  
Hospital Clínico Universitario de Valencia  
Instituto de Investigación Sanitaria INCLIVA

**October**  
23th - 26th

**VALENCIA 2018**



## ORGANIZATION

Department of Neurosurgery.  
Hospital Clínico Universitario de Valencia.  
Instituto de Investigación Sanitaria INCLIVA.

## DATES

October, 23th-26th 2018.

## VENUE

Universidad Europea de Valencia.  
C/ General Elio, 10.  
46010 Valencia.

## CONTENTS

Lectures and Conferences / Anatomical Laboratory / Microsurgical Approaches / Discussion of Complex Clinical Cases.

## LEARNINGS OBJECTIVES

1. Anatomic practice with high speed motors and neuroendoscopy equipment.
2. Anatomical practice of neuroendoscopic approaches to the ventricular system.
3. Anatomic practice of endoscopic approaches to the base of the skull.
4. 3D Anatomical demonstrations of ventricular, paraventricular and skull base anatomy.
5. Confrontation of anatomy and microsurgical and endoscopic approaches.
6. Presentation and discussion of cases, videos and techniques for situations and complex cases with experts.

## LABORATORY

8 working places with cadaveric specimens, lens, microscope, high speed power drill and instrumentation for 14 participants.

## WORKSHOP FEES

2.000 € (VAT included).

Full registration fee includes: lectures and laboratory, certificate, materials, course meals, course dinner and transfers from the course hotel.

## TECHNICAL SECRETARY



96 202 67 00 / 630 904 959  
neurosurgeryvalencia@mk8global.com

## GENERAL INFORMATION



### 12TH

Hands-on Course on  
Neurosurgical Approaches

### COURSE DIRECTOR

José M. González-Darder

### GUEST FACULTY

Radim Lipina  
Peter A. Winkler

### FACULTY

Pau Capilla-Guasch  
José M. González-Darder  
Vicent Quilis-Quesada  
Luis Real-Peña  
Fernando Talamantes

### SCIENTIFIC INFORMATION

gonzalez\_jos@gva.es

### Registration on-line:

[www.neurosurgeryvalencia.com](http://www.neurosurgeryvalencia.com)

Registration will be effective after full payment. Payment will be made only by bank transfer.



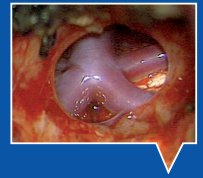
Course sponsored by The Spanish Society  
of Neurosurgery (SENEC)

[www.neurosurgeryvalencia.com](http://www.neurosurgeryvalencia.com)



12TH  
Hands-on Course on  
Neurosurgical Approaches

## ENDOSCOPY AND MICROSURGERY IN THE VENTRICULAR SYSTEM AND SKULL BASE



TUESDAY 23TH

WEDNESDAY 24TH

### BASIC TECHNIQUES AND EQUIPMENTS

SESSION 1

- 10:30-11:00 h. **BASIC ENDOSCOPIC PRINCIPLES: History, Room set-up, Equipment, and Applications**  
AESCULAP TEAM
- 11:00-11:30 h. **BASIC HIGHSPEED MOTOR PRINCIPLES: History, Room set-up, Equipment, and Applications**  
AESCULAP TEAM
- 11:30-12:30 h. **LABS HANDS-ON TRAINING: ENDOSCOPY**  
PARTICIPANTS
- 12:30-13:30 h. **LABS HANDS-ON TRAINING: HIGHSPEED MOTOR**  
PARTICIPANTS
- 13:30 h. **Welcome**  
JOSÉ M. GONZÁLEZ-DARDER

### NEUROENDOSCOPY: VENTRICULAR SYSTEM (I)

SESSION 2

- 14:30-15:00 h. **3D ANATOMICAL DEMONSTRATION: ANATOMY OF THE VENTRICULAR SYSTEM**  
VICENT QUILIS QUESADA
- 15:00-16:00 h. **GENERAL PRINCIPLES OF HYDROCEPHALY AND MANAGEMENT**  
RADIM LIPINA
- 16:00-17:00 h. **ANATOMICAL DEMONSTRATION: BASIC TECHNIQUES IN NEUROENDOSCOPY**  
RADIM LIPINA
- 17:00-18:00 h. **LABS HANDS-ON: BASIC TECHNIQUES IN NEUROENDOSCOPY**  
PARTICIPANTS
- 18:00-19:00 h. **MICROSURGICAL MANAGEMENT OF THE LATERAL AND THIRD VENTRICLES TUMORS**  
PETER A. WINKLER

### NEUROENDOSCOPY: VENTRICULAR SYSTEM (II)

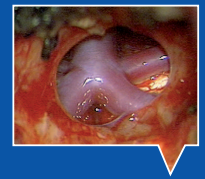
SESSION 3

- 08:30-09:00 h. **3D WHITE FIBERS ANATOMY OF THE VENTRICULAR SYSTEM SURROUNDINGS**  
PAU CAPILLA-GUASCH
- 09:00-09:30 h. **WHITE FIBERS TRACTOGRAPHY OF THE VENTRICULAR SYSTEM SURROUNDINGS**  
LUIS REAL-PEÑA
- 09:30-10:30 h. **ANATOMICAL DEMONSTRATION: NEUROENDOSCOPY**  
RADIM LIPINA
- 10:30-11:00 h. Coffee
- 11:00-12:30 h. **LABS HANDS-ON: LATERAL AND THIRD VENTRICLES NEUROENDOSCOPY**  
PARTICIPANTS
- 12:30-13:30 h. **ENDOSCOPIC MANAGEMENT OF HYDROCEPHALUS AND INTRAVENTRICULAR CYSTS AND TUMORS**  
RADIM LIPINA

### SKULL BASE ENDOSCOPY: ENDONASAL APPROACH

SESSION 4

- 14:30-15:00 h. **MICROSURGICAL TRANSPHENOIDAL APPROACHES TO THE SELLAR AND PARASELLAR TUMORS**  
FERNANDO TALAMANTES
- 15:00-16:00 h. **ANATOMICAL DEMONSTRATION: ENDOSCOPIC ENDONASAL APPROACH TO THE SELLA**  
RADIM LIPINA
- 16:00-18:00 h. **LAB HANDS-ON: ENDOSCOPIC ENDONASAL APPROACH TO THE SELLA**  
PARTICIPANTS
- 18:00-19:00 h. **ENDOSCOPIC ENDONASAL SURGERY OF THE SELLAR AND SUPRASELLAR LESIONS**  
RADIM LIPINA



THURSDAY 25TH

FRIDAY 26TH

**SKULL BASE ENDOSCOPY: EXTENDED ENDONASAL APPROACH (Anterior approaches)**

SESSION 5

- 08:30-09:00 h. **INTRACRANIAL MICROSURGICAL APPROACHES TO THE ANTERIOR FOSSA AND PARASELLAR TUMORS**  
JOSÉ M. GONZÁLEZ-DARDER
- 09:00-10:00 h. **LECTURE & ANATOMICAL DEMONSTRATION: EXTENDED ENDONASAL APPROACHES TO THE PLANUM AND OLFACTORY GROOVE**  
RADIM LIPINA
- 10:00-10:30 h. Coffee
- 10:30-12:30 h. **LAB HANDS-ON: ENDOSCOPIC ENDONASAL APPROACH TO THE ANTERIOR SKULL BASE**  
PARTICIPANTS
- 12:30-13:30 h. **ENDOSCOPIC ENDONASAL SURGERY OF THE ANTERIOR SKULL BASE LESIONS**  
RADIM LIPINA

**SKULL BASE ENDOSCOPY: EXTENDED ENDONASAL APPROACH (Posterior approaches)**

SESSION 6

- 14:30-15:00 h. **INTRACRANIAL MICROSURGICAL APPROACHES TO THE CLIVUS AND FORAMEN MAGNUM**  
JOSÉ M. GONZÁLEZ-DARDER
- 15:00-16:00 h. **ANATOMICAL DEMONSTRATION: EXTENDED ENDONASAL APPROACH TO THE CLIVUS AND CRANIOCERVICAL JUNCTION**  
RADIM LIPINA
- 16:00-18:00 h. **LAB HANDS-ON: ENDOSCOPIC ENDONASAL APPROACH TO THE POSTERIOR SKULL BASE**  
PARTICIPANTS
- 18:00-19:30 h. **CLOSURE OF DURAL DEFECTS IN ENDONASAL APPROACHES**  
RADIM LIPINA

**SKULL BASE ENDOSCOPY: EXTENDED ENDONASAL APPROACH (Lateral approaches)**

SESSION 7

- 08:30-09:00 h. **INTRACRANIAL MICROSURGICAL APPROACHES TO THE CAVERNOUS SINUS**  
JOSÉ M. GONZÁLEZ-DARDER
- 09:00-10:00 h. **ANATOMICAL DEMONSTRATION: EXTENDED ENDONASAL APPROACHES TO THE CAVERNOUS SINUS**  
RADIM LIPINA
- 10:00-10:30 h. Coffee
- 10:30-12:00 h. **LAB HANDS-ON: LAB HANDS-ON: ENDOSCOPIC ENDONASAL APPROACH TO THE CAVERNOUS SINUS**  
PARTICIPANTS
- 12:00-13:30 h. **ENDOSCOPIC ENDONASAL SURGERY OF THE POSTERIOR AND LATERAL SKULL BASE LESIONS**  
RADIM LIPINA
- 13:30 h. **Closure**  
RADIM LIPINA / JOSÉ M. GONZÁLEZ-DARDER

SPONSOR:



[www.neurosurgeryvalencia.com](http://www.neurosurgeryvalencia.com)

TECHNICAL SECRETARY



96 202 67 00

630 904 959

[neurosurgeryvalencia@mk8global.com](mailto:neurosurgeryvalencia@mk8global.com)